

Flagler County and Volusia County Collaborative 2022 Community Health Assessment

What is the CHA?

This Community Health Assessment is a document created to shine a light on the barriers that Flagler and Volusia County residents face in accessing the resources they need to maintain overall health and wellness. Data is collected and members of a collaborative team from the communities being assessed interpret that data to create a prioritized list of health needs to be addressed. Then, community leaders come together to develop a three year plan to address the Priority Health Issues identified during the CHA creation process.

The Process

The Flagler County and Volusia County Collaborative (FVC) gathered data and consulted experts using the following methods:

- FVC Leadership Team Met Bi-weekly
- Collected Secondary Data, consisting of over 200 data tables/charts
- Asset Mapping of current resources for each priority
- Identified Equity Champions, 5 community leaders representing priority communities
- Stakeholder Interviews with key community leaders to learn more about needs
- Community Surveys, including 1,115 in Volusia and 615 in Flagler
- Focus Groups, including over 150 participants in 13 small group discussions

The FVC then identified and considered 15 issues for each county.

The Findings

Finally, the following three Priority Health Issues were identified for both counties.

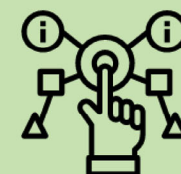
Access to Behavioral Health Services (Mental Health and Substance Use Disorder)



Economic and Social Barriers (Affordable Quality Housing, Childcare, and Income Supports)



System Infrastructure (Awareness of Resources, Ability to Access Services, and Information Sharing)



To access the entire 2022 Community Health Assessment, scan this QR code or visit www.ovfv.org/data.

